

# Loxon Locking Quick Disconnect (QD) Terminals >

Loxon Locking Quick Disconnect (QD) Terminals with positive locking help ensure reliable connectivity and prevent loose connections or accidental separation in high-vibration or continuous shock applications.



## PRODUCT FEATURES AND ADVANTAGES

### Tin plating of terminals after stamping

Helps prevent corrosion and eliminate un-plated (bare) edges for improved reliability

### Conformance to UL 310 standard

Assures optimal safety and performance

### Mating to 6.35 by 0.81mm male tabs with hole

Permits use with the most popular size of quick disconnect

### Availability with three wire ranges

Makes the terminal suitable for a wide variety of applications incorporating this type of connection

### Housing available with 94V-2 or 94V-0 UL flammability rating and Glow Wire Capable

Meets most customer requirements for use in harsh environments including home appliances and white goods

Current	Up to 24.0A
Wire	10, 12, 14, 16, 18 or 20 AWG
Mates With	6.35 by 0.81mm disconnect
Terminal Material	Copper Alloy with Tin plating
Housing Material	Nylon
Operating Temperatures	Terminal: -40 to +149°C Housing: -40 to +105°C



## MARKETS AND APPLICATIONS

### Consumer

- Home appliances
- Home standby generators
- HVAC systems
- Lawn and garden power equipment
- Furnace controls

### Commercial Vehicle

- Recreational vehicles
- Marine
- Motors
- Batteries

### Telecom Infrastructure

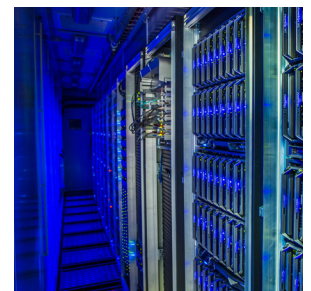
- Server and storage architecture
- Power distribution
- Industrial control panels
- Security systems
- Manufacturing equipment
- Lighting and controls



Recreational Vehicles



Home Appliances



Data Center

# Loxon Locking Quick Disconnect (QD) Terminals >

## SPECIFICATIONS

### Reference Information

Series Number: 19439

Packaging: Box or reel

Designed in: Inches

RoHS: Yes

Halogen Free: Yes

Glow Wire Capable (Housings): Yes

UL Flammability Ratings (Housings):

Part No. 19439-0007 – 94V-2

Part No. 19439-0008 – 94V-0

Agency: UL and cUL E79133

### Mechanical

Wire: 10, 12, 14, 16, 18 or 20 AWG

Style: VibraKrimp

Mating Tab: .250" by .031"

6.35 by 0.81mm

Hand Tool:

10 and 12 AWG – 213309-4300

14 and 16 AWG – 213309-4200

18 and 20 AWG – 213309-4100

Applicator:

10 and 12 AWG – 203702-9400

14 and 16 AWG – 203702-9300

18 and 20 AWG – 203702-9200

Durability (max.): 25 cycles

(UL 310 has a 6-cycle requirement)

### Electrical

Voltage (max.): 600V AC (in housing)

Current (max.): 24.0A (with 10 AWG)

### Physical

Housing: Nylon

Terminal Material: Copper Alloy

Plating: Tin (2.54 microns min.)

Operating Temperatures: Terminal: -40 to +149°C

Housing: -40 to +105°C

[www.molex.com/en-us/products/connectors/solderless-terminals](http://www.molex.com/en-us/products/connectors/solderless-terminals)