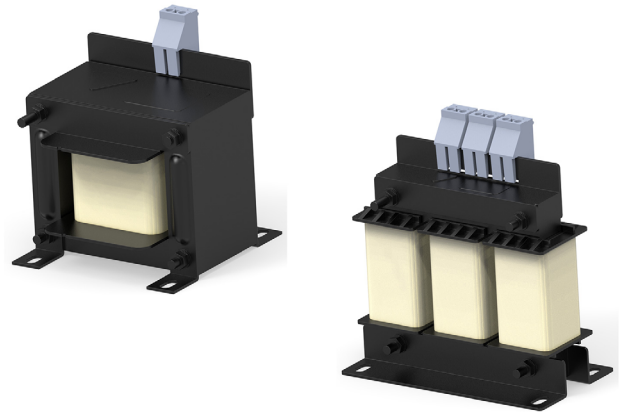


# INTRODUCING CORCOM RPQ SERIES LINE REACTORS

- Copper windings provides high conductivity and relatively low cost
- Protection of motor drive electronics



TE Connectivity (TE)'s Corcom RPQ series line reactors are designed to help protect AC/DC motor drives from power line disturbances and disruptions from the line side. While also offering a solution to harmonic distortion issues and power disturbances to your Variable Frequency Drives (VFD). High performance line reactors with copper winding deliver low losses to power harmonics mitigation solution to motor drive OEMs.

TE offers single phase and three phase RPQ line reactors. The single phase offers a rating from 2A up to 1000A with max voltage up to 250V. The three-phase line reactors offer a rating from 1.76A up to 1010A for 50/60Hz network max 480V.

## APPLICATIONS

- Motion & drives
- BESS & EV charging infrastructure
- Automation controls
- Power quality applications
- Various adjustable speed drive systems
- Harmonic reduction
- Process automation equipment

## TARGET MARKETS

- AC/DC drives
- Servo systems
- Industrial machinery
- UPS
- BESS and EV charging systems
- Power conversion systems and rectifiers

## KEY BENEFITS

- Copper windings provides high conductivity and relatively low cost
- Protection of motor drive electronics
- Limitations of inrush currents
- Prevention from nuisance tripping caused by power line voltage spikes
- Improvement of true power factor
- Reduce power distortion and low ripple
- Complies with Industry standards
- Impedance at 4%

## LEARN MORE

- [Corcom RPQ Series Line Reactors flyer](#)
- [Corcom Single Phase RPQ Series Line Reactors PLP](#)
- [Corcom Three Phase RPQ Series Line Reactors PLP](#)
- [Corcom Single Phase Power Line Filters PGP](#)
- [Corcom Three Phase Power Line Filters PGP](#)